



# FLYER<sup>®</sup> 72 |

# LD LIGHT DUTY



## Introducing the World's Most Advanced CH-47 Internally Air Transportable Infantry Squad Vehicle

The Flyer<sup>®</sup> 72 Light Duty Vehicle (LD) is a lightweight variant of the M1288 GMV 1.1 and XM1297 Army Ground Mobility Vehicle (AGMV) both currently in operational use.

The Flyer<sup>®</sup> LD has a low 5,000 lb VCW, which allows for full mission flexibility of high hot UH-60 sling load and unmatched payload capability of 5,000 lb with no kit and 8,000 lb with kit achieving an unparalleled 1.6:1 payload to curb weight ratio.

The Flyer<sup>®</sup> LD retains the same mobility, maneuverability and reliability of the GMV 1.1 and Army GMV variants leveraging 95% commonality of components.

Like all our Flyer<sup>®</sup> 72 variants, the LD is purpose built to reliably operate in severe, rugged and restrictive terrain, in all weather conditions.

Flyer Defense, LLC  
151 W 135th St  
Los Angeles, CA 90061

office: (310) 324-5650  
fax: (310) 324-5646  
flyerdefense.com

## DRIVEN TO EXCEED<sup>™</sup>

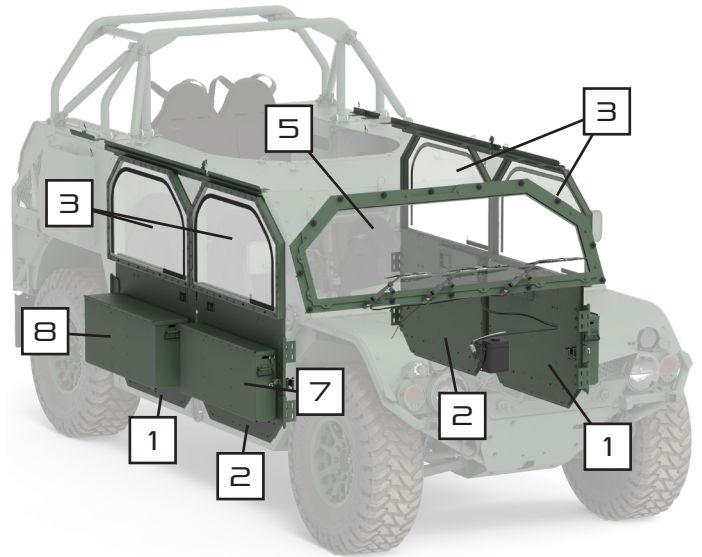


### MODULAR. MOBILE. MISSION-READY

#### ENCLOSURE

- |    |             |   |  |
|----|-------------|---|--|
| 1  | SPAL4002260 | Assembly, Lower Door with Hinges, FR-LH & RR-RH* (Requires SPAL4022239) | Assembly, Lower Door with Hinges, FR-LH & RR-RH* (SPAL4022239 Kit, Door, Mounting) |
| 2  | SPAL4002313 | Assembly, Lower Door with Hinges, FR-RH & RR-LH* (Requires SPAL4022239) | Assembly, Lower Door with Hinges, FR-RH & RR-LH* (SPAL4022239 Kit, Door, Mounting) |
| 3  | 12616209    | Kit, Upper Door/Windows (set of 4)                                      |  |
| 4* | SPAL4022216 | Kit, Enclosure, Rear Roof and Window                                    |  |
| 5  | SPAL4022215 | Kit, Windshield, with Wiper/Washer                                      |  |
| 6* | AL4023727   | Kit, Heater/Defroster, AGMV   |  |
| 7  | AL4002295   | Assembly, Narrow Cargo Box  |  |
| 8  | AL4002307   | Assembly, Wide Cargo Box  |  |

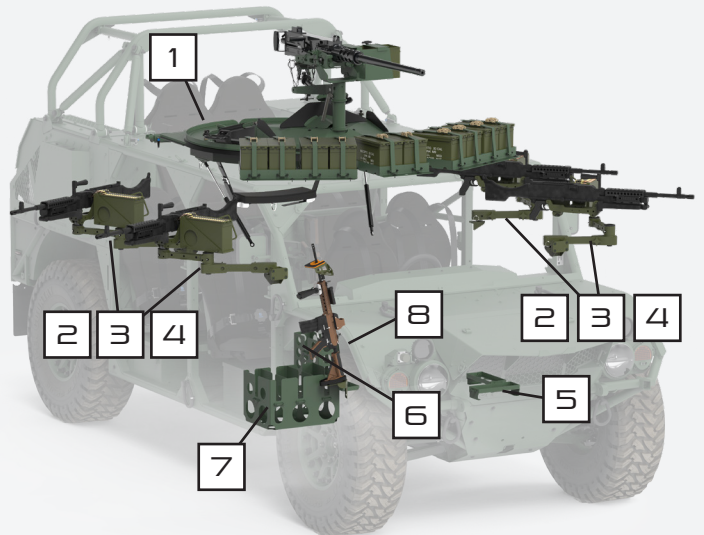
\*Not Pictured Here\*

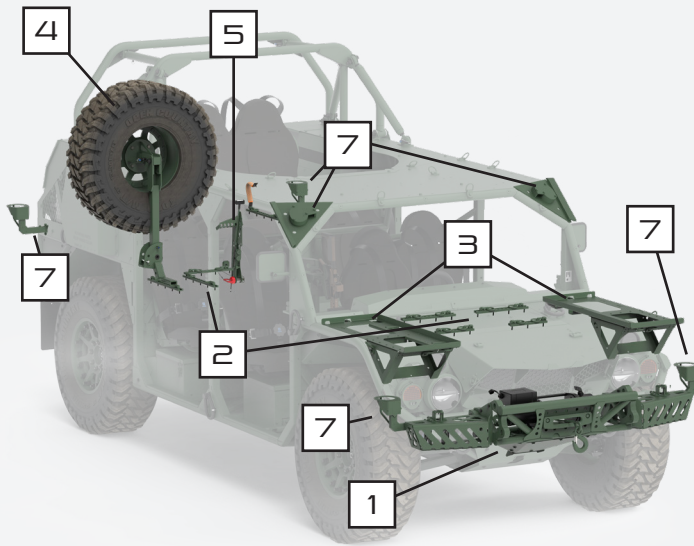


#### WEAPONS

- |   |             |  |  |
|---|-------------|--|--|
| 1 | SPAL3001083 | Assembly, Turret Ring, Includes Arms and Seats |  |
| 2 | AL4011224   | Weapon Pintle, Door Exterior                   |  |
| 3 | AL4006877   | Weapon Swing Arm, M240/249                     |  |
| 4 | AL4006855   | Weapon Mount, Machine Gun, M240/M249           |  |
| 5 | AL4009324   | Mounting Bracket, 7.62, Floor Mount            |  |
| 6 | AL4009329   | Mounting Bracket, 7.62, 3 Cans                 |  |
| 7 | AL4009343   | Mounting Bracket, Ammo, Front                  |  |
| 8 | AL4021899   | Mount, Personal Weapon                         |  |

\*\*\*Weapons not included\*\*\*

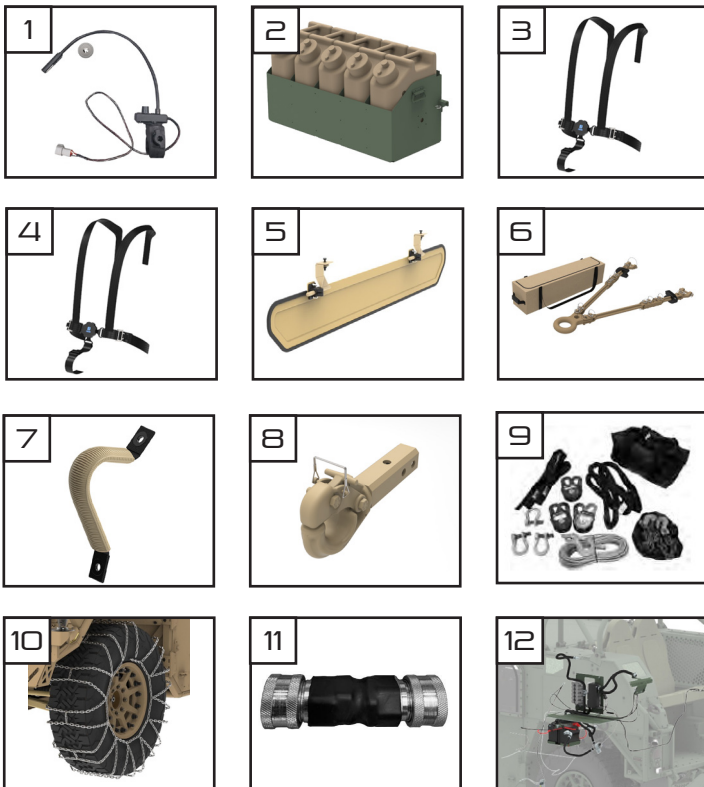




## EXTERIOR

1	AL4021589	Kit, Lane Clearing and Winch
2	SPAL4021708	Kit, Quickrail System
3	57K8475	Kit, Litter System, Hood
4	AL4009640	Spare Tire Carrier Assy, Side Rotating
5	AL4012898	Assy, Rear Step, Folding (For use with Spare Tire Carrier)
6*	AL4020174	Step, Tailgate (Not Compatible with AL4009640 Tire Carrier)
7	SPAL4021922	Kit, Antenna Mounts, AGMV

\*Not Pictured Here\*



## ADDITIONAL ITEMS

1	57K8476	Kit, Blackout Light
2	AL4021049	System, Box Side, 5 Jerry Can
3	AL4021077	Belt, Harness, Rotary Latch, Locked Left
4	AL4021078	Belt, Harness, Rotary Latch, Locked Right
5	AL4011891	Kit, Sun Visor
6	AL4021802	Kit, Tow Bar with Bag
7	AL4011888	Paracord Grommet Grab Handles Khaki
8	AL4011138	Assembly, Towing, Pintle
9	AL4003945	Self Recovery Kit
10	AL4006820	Set, Axle, Tire Chain, 17 inch Wheel, 37 inch Tire
11	AL4012890	Assembly, Quick Disconnect Adapter
12	AL4021769	Kit, Cold Start

## TRAINING

OPNET-MTT	Operator New Equipment Training
ATDC	Advanced Tactical Driver Training
AGMV-IMT-MTT	Intermediate Maintainer Training Course (AGMV)

# FLYER 72 LD

## PERFORMANCE

Top Speed	75 mph (120 kph)
Cruising Range	300 miles (483 km) at Mission Profile; 500 miles on flat ground at 40 mph (1,046 km)
Maximum Grade	60%
Dynamic Side Slope	40%
Turning Radius	6 m curb to curb
Fording	30" no prep (76 cm)
Temp. Range	-25° F to 125° F (-32° C to 52° C)



## DIMENSIONS

Seating	5 + 4 Seating
Wheelbase	126" (320 cm)
Length	186.5" (473.7 cm)
Body Width	Chassis width: 72" Width at tire: 79.25" (201 cm)
Height	72" (183 cm) Adjustable
Curb Weight	5,000 lb. (2,268 kg)
Payload	5,000 lb. (2,268 kg)
Approach Angle	65° (without optional winch)
Departure Angle	53°
Ramp Over Angle	146.7°
Vertical Step	18" (45.7 cm)
Ground Clearance	14" (35 cm)
Fuel Capacity	23 gal. (87.5 L)
Chassis	Tubular Space Frame
Roll Cage	Integrated and secondary roll cages meets FMVSS 216 & SAE J2422 CH#5 & 6

## POWERTRAIN

Engine Type	2.0 L GM DOHC BiTurbocharged Intercooled JP8/F24/Diesel Direct Injection Common Rail Fuel System
Horsepower/Torque	195 HP (145 kW)/ 295 ft. -lb. (400 Nm)
Transmission Type	Automatic power shift 6 speed (Tiptronic)
Torque Converter	Lockable
Differentials	Limited slip-front and limited-slip locking rear
Transfer Case	Single speed high 4x2 or low full time 4x4

## SUB SYSTEMS

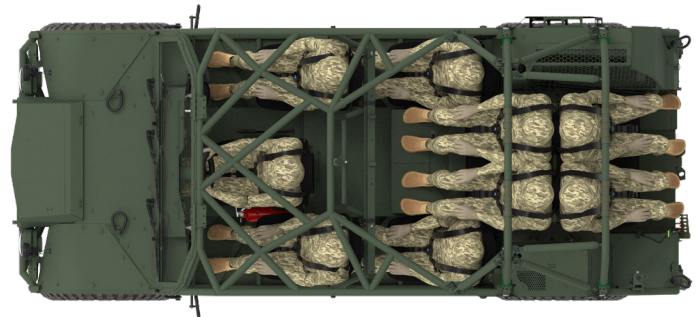
HD Suspension, f/r	4-wheel coil over shocks independent adjustable suspension with 4 air spring variable ride
Service Brakes, f/r	Power assist 4-wheel disc with ABS
Wheel and Tire Size	Wheel size 37 x 12.5 R17 load range D with bead lock and VFI run flat

## ELECTRICAL

Charging System	12V, 140 amp
Battery Capacity	1 x 12V System, 68 Ah
Charging System	28V, 140 amp (Optional)
Battery Capacity	1 x 12V System, 128 Ah (24V System Optional)

## TRANSPORTABILITY

Height	Reducible to <72" (184 cm)
Compatibility	IAT CH-47 Sling UH-60 LVAD C-130 LVAD and DRAS C-17 and C-5



Trademark and Copyright Notice  
©2022 Flyer Next, LLC and Flyer Defense, LLC - All Rights Reserved

All trademarks are registered or unregistered trademarks of Flyer Next, LLC, Flyer Defense, LLC or one of their affiliates in the U.S. and are protected under trademark laws of the United States and certain foreign jurisdictions. Trademarks of third parties may appear in this presentation to refer to those companies' goods and services and are the property of their respective owners.

