

*Type: Car, Armored, 4x4 Nomenclature: T11E2 Armored Car  
Country: US Date of Introduction: 1936*

**Physical Data:**

**Weight:**

Empty ..... 12,400 lbs (5630 kgs)  
 Loaded ..... 13,025 lbs (5913 kgs)  
 Length (OA) ..... 180 in (4572 mm)  
 Width (OA) ..... 86 in (2184 mm)  
 Height (OA) ..... 104 in (2642 mm)  
 Ground Clearance ..... 10.5 in (267 mm)  
 Wheel Base ..... 116 in (2946 mm)  
 Wheel Tread .....  
 Drive ..... 4x4  
 Armor ... .19 to .44 in (4.8 to 11.2 mm)  
 NBC Protection ..... No

**Armament:**

Main - Cal ... (1) .50 and (1) .30 cal MG  
 Model .....  
 Elevation ..... Manual  
 Traverse ..... Manual  
 Fire Control .....  
 Aux wpn - Cal ..... (1) .30 cal LMG

**Capacity:**

Fuel ..... 41 gals (155 liters) gasoline  
 Ammo/Qty ..... .50 cal (1,000 rds)  
 ..... .30 cal (2,000 rds)  
 Crew/Passengers ..... 4

**Engine:**

Type ..... In-line  
 HP at Rev/Min .... 115 hp @ 2800 rpm  
 Model ..... WXLC-3  
 Mfr ..... Hercules  
 No. of Cyls ..... 6  
 Location ..... Rear  
 Cooling ..... Liquid

**Transmission:**

Type ..... Manual  
 Speeds Fwd/Rev ..... 5/1  
 Model .....  
 Mfr .....  
 Mfr .....

**Suspension System:**

Type ..... Leaf spring  
 Wheels Steerable ..... Front axle  
 Turning Radius ..... Right 54' 3" (16.6 m)  
 ..... Left 57' 8" (17.6 m)  
 No of total wheels ..... 4  
 Tire Size ..... 9.00x20

**General Data:**

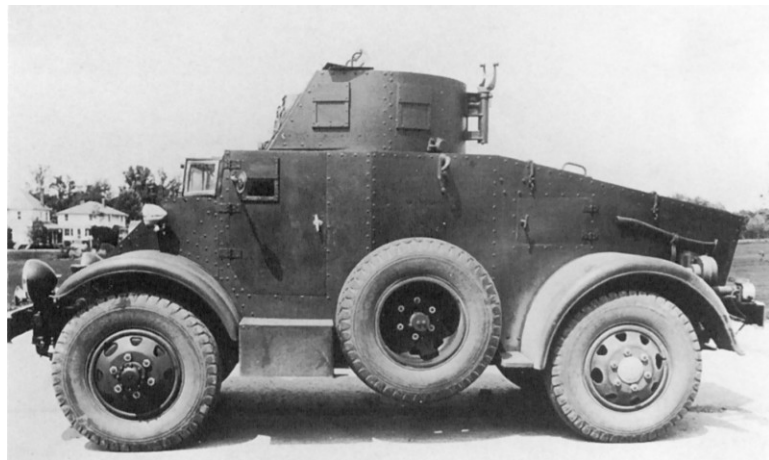
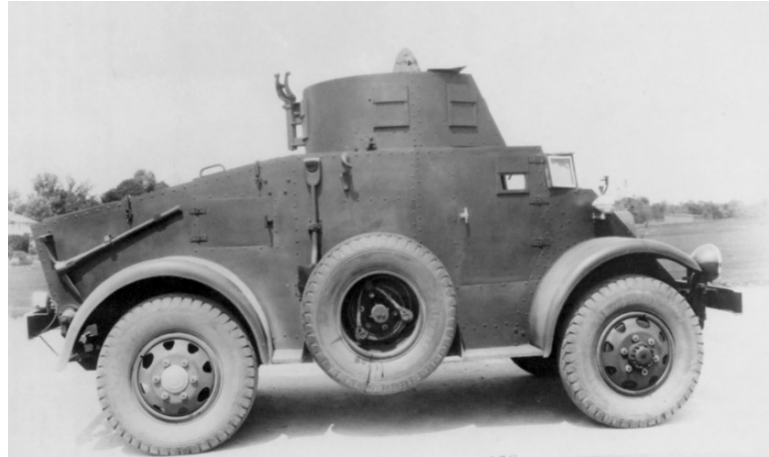
Elec Voltage .....  
 Intercom .....

**Night Vision Devices:**

Driver .....  
 Commander .....  
 Gunner .....

**Performance:**

Speed/Land ..... 53 mph (85 km/h)  
 Speed/Water .....  
 Cruising Rng ..... 250 mi (402 km)  
 Forging Depth ..... 33 in (838 mm)  
 Max Grade .....  
 Trench Crossing .....  
 Step .....



Remarks: Only one of the T11 orders from Marmon-Herrington was built as a T11E2. This version had several changes from the T11/T11E1. Changes included, the armored body was smoothed and simplified for easier production. What was then one of the US Army standard engines (the Hercules 6-cylinder in-line) was substituted for the original Cadillac V8. The rear end ratio gearing was changed from 7.36/1 to 6.6/1. The rear shutters used to cool the engine were changed to solid plates and the direction of air-flow over the radiator changed. The turret was also replaced with the same design as on the M2 Combat Car. Even with these changes the car still had problems with a weak suspension and poor cooling.

Above: The only T11E2 completed. Even with changes in the design the vehicle wasn't type classified. (Photos: US Army)

Usage: US Army only, one T11E2 completed.

Manufacturer: Marmon-Herrington.