

*Type: Car, Armored, 4x4 Nomenclature: T11E1 Armored Car
Country: US Date of Introduction: 1934*

Physical Data:

Weight:

Empty 11,145 lbs (5060 kgs)
 Loaded 12,920 lbs (5866 kgs)
 Length (OA) 183 in (4648mm)
 Width (OA) 79 in (2007mm)
 Height (OA) 88 in (2235mm)
 Ground Clearance ... 11.5 in (292mm)
 Wheel Base 116 in (2946mm)
 Wheel Tread
 Drive 4x4
 Armor375 in (9.52mm)
 NBC Protection No

Armament:

Main - Cal ... (1) .50 cal HMG M2
 and (1) .30 cal LMG in the turret
 Model.. Combination Gun Mount T7E1
 Elevation Manual
 Traverse Manual
 Fire Control
 Aux wpn - Cal (1) .30 cal LMG in bow

Capacity:

Fuel 45 gals (170 liters) gasoline
 Ammo/Qty50 cal (1,000 rds)
30 cal (1,500 rds)
 Crew/Passengers 4

Engine:

Type (1) V8
 HP at Rev/Min 118 hp @ 3200 rpm
 Model Mod 355-B
 Mfr Cadillac
 No. of Cyls 8
 Location Rear
 Cooling Liquid

Transmission:

Type Manual
 Speeds Fwd/Rev 5/1
 Model
 Mfr Spicer

Suspension System:

Type Leaf spring
 Wheels Steerable (2) Front axle
 Turning Radius
 No of total wheels 4
 Tire Size 9.00x20

General Data:

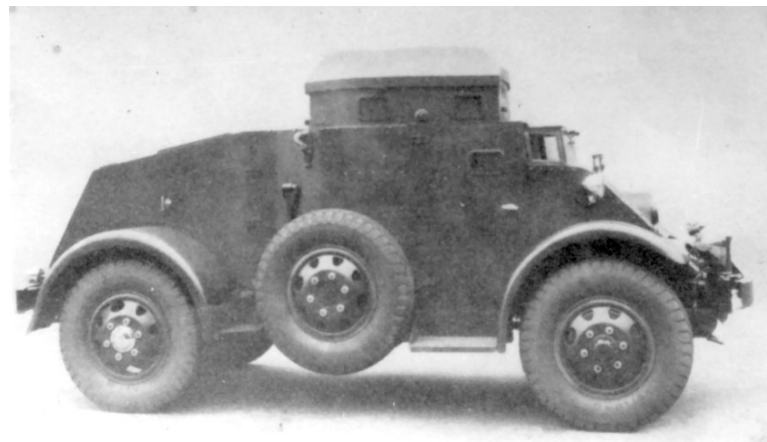
Elec Voltage
 Intercom
 Cargo Volume

Night Vision Devices:

Driver
 Commander
 Gunner

Performance:

Speed/Land 66 mph (106 km/h)
 Speed/Water
 Cruising Rng 230 mi (370 km)
 Fording Depth 30 in (762mm)
 Max Grade
 Trench Crossing
 Step



Remarks: The T11E1 was the production version of T11 series with six vehicles built in 1934 (five as the T11E1 and one as the T11E2). Changes from the T11 included a new cooling system and larger tires and wheels. The new tires included a sponge rubber filling instead of inner tubes. Substantially the same designs as the T11 but with .375 inch (9.52mm) armor replacing the .25 inch (6.35mm) armor of the T11.

Usage: Only used by the US Army in the 1930s.

Manufacturer: Marmon-Herrington Company.

Above: T11E1 Armored Cars as built by Marmon-Herrington. Note that the vehicle now has free rotating spare wheels in place of the rollers at each side, and no longer uses dual wheels at the rear. (Photos: US Army)