

Type: Car, Armored 4x2 Nomenclature: **Samochód Pancerny Ford Tfc**
 Country: Poland Date of Introduction: 1919

Physical Data:

Weight empty 2200 lb
 Weight loaded 2400 lb
 Length (OA) (3250mm)
 Width (OA) (1550mm)
 Height (OA) (2000mm)
 Ground clr (250mm)
 Wheel base unk
 Wheel tread unk
 Drive 4x2

Armor
 (3 to 8mm)
 NBC protection Individual

Armament:

Main - Cal (1) Maxim 08/15
 7.92mm LMG
 Elev & traverse Manual
 Fire control Optical
 Aux wps Crew side arms

Capacity:

Fuel Gasoline (35 Liter)
 Ammo/Qty 1250 rds 7.92mm
 Crew/Pass 2
 Cargo Vol/Wgt 200 lb

Engine:

Type Gasoline
 HP at Rev/Min 22 hp (kW)
 Model unk
 Mfr Ford
 No. of Cyls 4
 Location Front
 Cooling Liquid

Transmission:

Type Manual
 Gear Fwd/Rev 3/1
 Model unk
 Mfr Ford

Suspension System:

Type Leaf spring
 Steering Front axle
 Turning radius unk
 No/wheels 4
 Tire Size unk

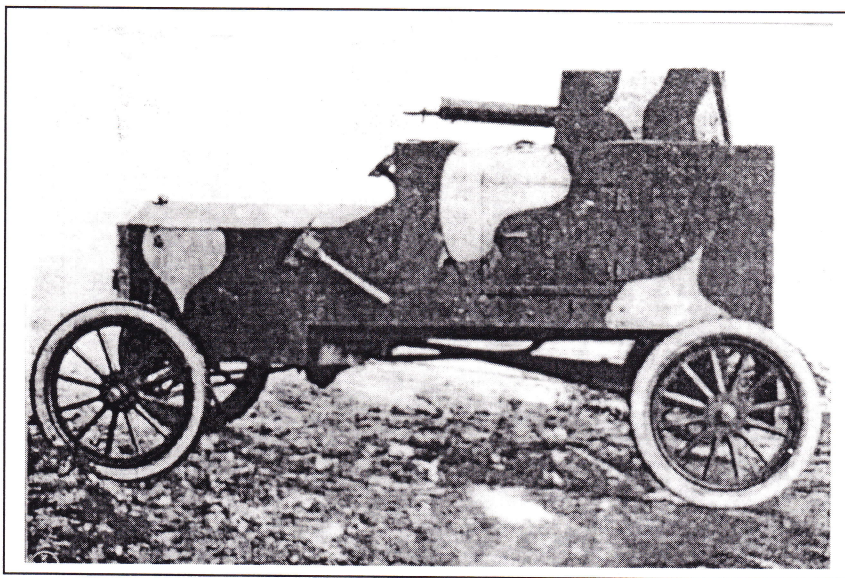
General Data:

Elec voltage unk
 Radio none

Night Vision: none

Performance:

Speed/Land (50 km/h)
 Speed/Water n/a
 Range (200km)
 Fording depth (400mm)
 Max grade unk
 Trench unk
 Step unk



Remarks: One of the vehicles that Polish designers pursued over the 1920s was the little Ford Tfc. Based on the Ford Model T; the Tfc had a fully armored body on a Model T chassis. Even though only able to handle a crew of two, the cars were fairly successful seeing most of their action circa 1920.

Above: Polish Ford Tfc light armored car.

Usage: Only used by the Polish Army.

Manufacturer: Polish state arsenals.