

Type: Vehicle, Utility Nomenclature: **Truck, Utility, 1/4-Ton, 4x4, M606**

Country: US Date of Introduction: 1963

**Physical Data:**

**Weight empty** 2418 lb (1098 kg)  
**Weight loaded** 3500 lb (1589 kg)  
**Length (OA)** 129.9 in (3300 mm)  
**Width (OA)** 68.9 in (1750 mm)  
**Height (OA)** 68.5 in (1740 mm)  
**Ground clr** 8.8 in (224 mm)  
**Wheel base** 80 in (2032 mm)  
**Wheel tread** 49 in (1245 mm)  
**Drive** 4x2 or 4x4  
**Armor** When fitted, proof  
Against 7.62mm Ball  
**NBC protection** Individual

**Armament:**

**Main – Cal** As fitted by user  
**Elev & traverse** n/a  
**Fire control** n/a  
**Aux wpns** Crew side arms

**Capacity:**

**Fuel** Gasoline 10.5 gals  
(40 liters)  
**Ammo/Qty** unk  
**Crew/Pass** 1+3  
**Cargo Vol/Wgt** 1082 lb (491 kg)

**Engine:**

**Type** Gasoline  
**HP at Rev/Min** 71 hp (52.4 kW)  
@ 4000 rpm  
**Model** F4-134  
**Mfr** Willys/Kaiser Jeep  
**No. of Cyls** 4  
**Location** Front  
**Cooling** Liquid

**Transmission:**

**Type** Manual  
**Gear Fwd/Rev** 3/1 w/2-spd trans  
**Model** unk  
**Mfr** Willys

**Suspension System:**

**Type** Leaf spring  
**Steering** Manual, Front axle  
**Turning radius** 16 ft 11 in (5.15 m)  
**No/wheels** 4  
**Tire Size** 7.00x16

**General Data:**

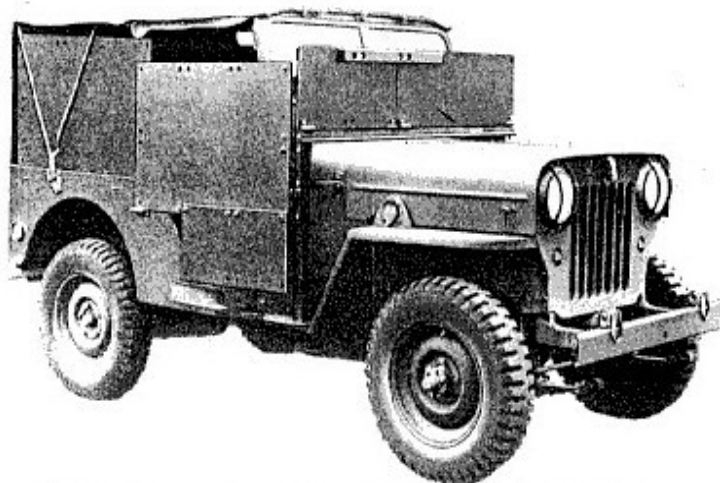
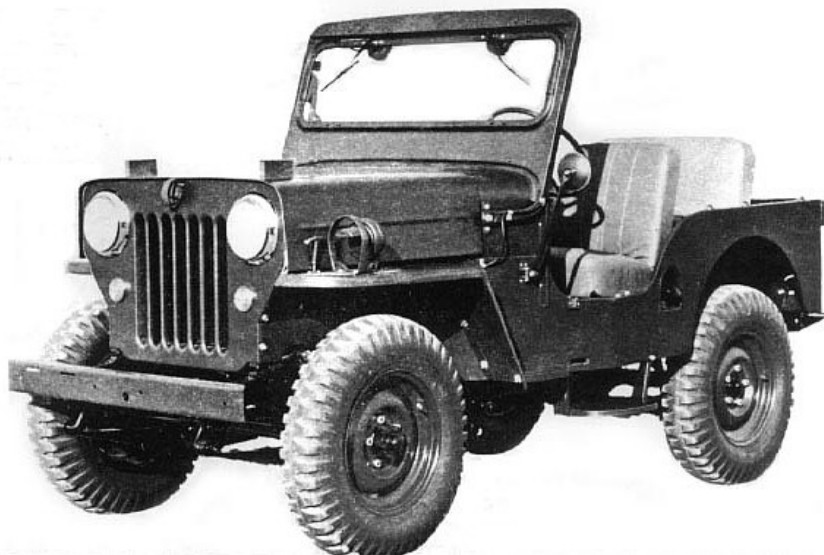
**Elec voltage** 12 or 24V as fitted  
**Radio** As fitted by user

**Night Vision:**

as fitted by user

**Performance:**

**Speed/Land** 55 mph (89 km/h)  
**Speed/Water** n/a  
**Range** 175 mi (282 km)  
**Fording depth** 20 in (508 mm)  
**Max grade** 60%  
**Trench** unk  
**Step** unk



Top: A Willys/Kaiser M606 straight off the production line. This M606 includes the fender mounted blackout light. (Photo: Kaiser Jeep International) Above: The headlight guards and lifting shackles identify this vehicle as a Mitsubishi with the addition of the armored kit. The lifting shackle on the front bumper indicates it's a J4C with 24-volt electrical system. (Photo: US Army)

**Remarks:** The M606 was basically the Willys CJ-3B straight off the assembly line, with heavy-duty options such as; larger tires and springs, a blackout lamp on the left front fender, blackout tail-light covers, a military standard trailer hitch and other minor changes. The M606 used the standard F-head Hurricane 4-cylinder engine, and although an M606 model number was assigned, serial numbers came from the regular CJ-3B series. The M606 designation itself was used almost exclusively for Jeeps built for overseas military aid or sale. A four-page Service Manual Supplement (SM-1018 R1) to the Universal Jeep Service Manual (SM-1002-R5) describes and illustrates "special equipment items as installed on Jeep model M606 (CJ-3B modified)". Photographic evidence shows CJ-3B type Jeeps in use in joint U.S. and ARVN military operations during the Vietnam war. Many of these vehicles were Mitsubishi CJ3B-J4 and J4C models, manufactured under license in Japan, as well as M606 Jeeps built in the U.S. by Kaiser. Although the U.S. Army also used the J4 and J4C, these Jeeps appear primarily in support rather than combat roles. The U.S. Army did issue an "Armor Adaptation Kit" for the Mitsubishi Jeeps, consisting of steel plates for windshield, sides and back. The kit was fielded with Modification Work Order J9-601-10 from U.S. Army Depot Command, Japan, in January 1968. The manual estimates installation time as 12 man-hours.

**Usage:** Used by US, South Vietnam, Argentina, Brazil, Japan and other MAP countries.

**Manufacturer:** Willys/Kaiser Jeep International Corp, Oakland, CA USA.

Wheeled Fighting Vehicle Data Sheets © David R. Haugh, 2002

19638404030412

Cataloged: 06/23/02 Revised: 01/08/07 Chg 1